



Urban Hardware Product Catalogue

Category	Page
Profile Handles.....	1-2
Brackets & Accessories.....	1-2
C Section Profile Handle.....	2
Sofa Legs.....	3-20
Aluminium.....	11-14
Chrome.....	15-16
Mounting plate.....	16
Stainless Steel.....	16
Timber.....	17-20
Table Legs.....	21-23

Brackets & Accessories

End Bracket for C Section Profile Handle

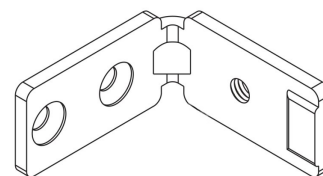
The end bracket is designed to be used with the **C Section Profile Handle**. It is used to attach the profile to the end panels and partitions in a cabinet.

It is easily locked into position using an allen key and grub screw and then attached to the panel with countersunk screws.

Specifications

- Zinc Plated Steel
- Packet QTY: 1

Order No.	Price
CPH.EC.001	\$2.47



End Caps for 52mm C Section Profile Handle

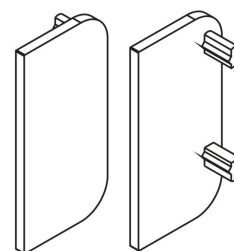
The end caps are designed to create a finished face in any spot where the end of the **C Section Profile Handle** may be exposed, such as through middle drawers or next to appliances.

They are simply held in place with a push fit and are sold as a matching pair.

Specifications

- Materials: Aluminium
- Packet QTY: 2 (matching pair)

Order No.	Price
CPH.52ECAP.001	\$4.79



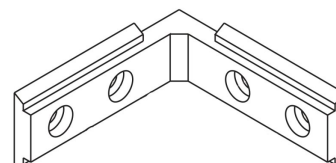
External Corner Bracket for C Section Profile Handle

The external corner bracket is designed to create an external corner with the **C Section Profile Handle** as would be found around a kitchen island. Once the profile handle has been mitred, the bracket simply slides into the rear channel and is held in place using the allen key grub screws.

Specifications

- Zinc Plated Steel
- Packet QTY: 1

Order No.	Price
CPH.CCEX.001	\$3.95



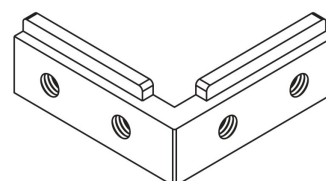
Internal Corner Bracket for C Section Profile Handle

The internal corner bracket is designed to create an internal corner with the **C Section Profile Handle** as would be found in a corner kitchen cabinet. Once the profile handle has been mitred, the bracket simply slides into the rear channel and is held in place using the allen key grub screws.

Specifications

- Zinc Plated Steel
- Packet QTY: 1

Order No.	Price
CPH.CCIN.001	\$3.95

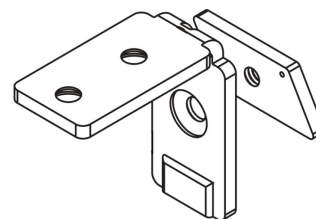


Brackets & Accessories

Top Bracket for C Section Profile Handle

The top bracket is designed to be used with the **C Section Profile Handle**. It is used to attach counter tops to the profile.

The rear plate allows it to be placed anywhere along the rear channel even when the profile handle is already in place. It is easily locked into position using an allen key and grub screw and then attached to the top with the countersunk screw mountings.



Specifications

- Zinc Plated Steel
- Packet QTY: 1

Order No.	Price
CPH.TB.001	\$2.47

C Section Profile Handle

52mm C Section Profile Handle

For a limited time only the C section profile handle is 20%off for any pre-orders before the 6th of November.

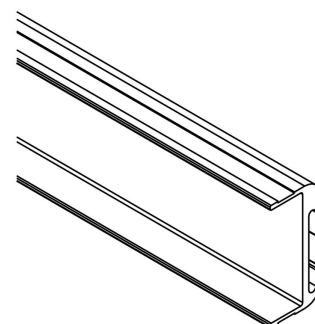
Order your stock before the Christmas rush.

The 52mm C Section profile handle offers a versatile solution to creating handle-free kitchens and cabinets. Replacing the 2x1 rail used in manufacturing cabinets the C Section can be easily installed into a run of cabinets using the matching end brackets and top brackets to create a sleek handle free look to the kitchen.

The 52mm profile can be used as a top finger pull or between drawers to create an over and under finger pull as pictured.

The profile handle also features a glue channel for attaching stone or manufactured stone counter tops and can be combined with the corner-brackets to run around corner cupboards and kitchen islands.

Manufactured in Australia the C Section is constructed of high quality aluminium and clear/silver anodising for a durable finish that also promises to reduce visible fingerprints and other marks.



Specifications

- Material: Aluminium
- Finish: 10µm clear/silver anodised
- Length: 3600mm (3700mm with docking allowance)
- Width: 25mm
- Height: 52mm
- Pack QTY: 1 length

Complete your C Section handle purchase with **End-caps**, **End-brackets** and **other accessories**.

Order No.	Price
CPH.52.360.001	\$93.60

Aluminium Sofa Leg 38mm Square 100mm High

Update the look of your sofa to match other silver and aluminium finished elements in your home with these aluminium sofa legs. Clear anodised for a durable finish they include a black plastic glide to protect your floors.

Specifications

- Fixing: Standard T-Nut hanger bolt 5/16" (8mm)
- Tube: Clear anodised aluminium
- Glide: Black Plastic
- Size: 38w x 38d x 100h mm

The 5/16 bolt will fit a metric 8mm nut making it suitable to use on most IKEA sofas.

Also available with 3/8" (10mm) bolt by special order.

Custom heights are also available.

Order No.	Price
PRE Alu SQ 38x100	\$15.50



Aluminium Sofa Leg 38mm Square 150mm High

Slim in width but with extra height, these aluminium sofa legs are great for adding extra height to your sofa while maintaining a delicate look. Made from clear anodised aluminium they are corrosion resistant making the perfect for coastal areas. Complete with a black plastic glide to help protect your floors.

Specifications

- Fixing: Standard T-Nut hanger bolt 5/16" (8mm)
- Tube: Clear anodised aluminium
- Glide: Black Plastic
- Size: 38w x 38d x 150h mm

The 5/16 bolt will fit a metric 8mm nut making it suitable to use on most IKEA sofas.

Also available with 3/8" (10mm) bolt by special order.

Custom heights are also available.

Order No.	Price
PRE Alu SQ 38x150	\$19.80



Aluminium Sofa Leg 50mm Square 100mm High

The perfect sofa leg for complementing the geometric lines of your sofa or lounge with a modern aluminium finish. Clear anodised for a hardwareing corrosion resistant surface that are a good choice for coastal areas. Included with a black plastic glide to protect your floors.

Specifications

- Fixing: Standard T-Nut hanger bolt 5/16" (8mm)
- Tube: Clear anodised aluminium
- Glide: Black Plastic
- Size: 50w x 50d x 100h mm

The 5/16 bolt will fit a metric 8mm nut making it suitable to use on most IKEA sofas.

Also available with 3/8" (10mm) bolt by special order.

Custom heights are also available.

Order No.	Price
PRE Alu SQ 50x100	\$15.50



Aluminium Sofa Leg 50mm Square 150mm High

The perfect mid sized sofa leg with a little extra height. Add those missing inches to the height of your sofa without compromising on the style of the legs. Finished with a durable clear anodising they are great for coastal areas due to their corrosion resistance. Finished with a black plastic glide to protect your floors from scratching.

Specifications

- Fixing: Standard T-Nut hanger bolt 5/16" (8mm)
- Tube: Clear anodised aluminium
- Glide: Black Plastic
- Size: 50w x 50d x 150h mm

The 5/16 bolt will fit a metric 8mm nut making it suitable to use on most IKEA sofas.

Also available with 3/8" (10mm) bolt by special order.

Custom heights are also available.

Order No.	Price
PRE Alu SQ 50x150	\$19.80



Aluminium Sofa Leg 60mm Dia 100mm height

A great all rounder sofa leg. The round shape adds softness to geometric lines in sofas and the shorter more compact shape makes it less obtrusive. The clear anodised finish gives it a hardwareing corrosion resistant surface for use in coastal areas.

Specifications

- Fixing: Standard T-Nut hanger bolt 5/16" (8mm)
- Tube: Clear anodised aluminium
- Glide: Black Plastic
- Size: 60mm diameter x 100 high mm

The 5/16 bolt will fit a metric 8mm nut making it suitable to use on most IKEA sofas.

Also available with 3/8" (10mm) bolt by special order.

Custom heights are also available.

Order No.	Price
PRE100	\$14.07



Aluminium Sofa Leg 60mm Dia 150mm High

A slightly thinner, taller sofa leg that is great for increasing the height of low line sofas. The anodised aluminium finish is corrosion resistant making them a good choice for coastal areas.

Specifications

- Fixing: Standard T-Nut hanger bolt 5/16" (8mm)
- Tube: Clear anodised aluminium
- Glide: Black Plastic
- Size: 60mm diameter x 150 high mm

The 5/16 bolt will fit a metric 8mm nut making it suitable to use on most IKEA sofas.

Also available with 3/8" (10mm) bolt by special order.

Custom heights are also available.

Order No.	Price
PRE150	\$19.50



Aluminium Sofa Leg 70mm Square 100mm High

Short and wide, these aluminium sofa legs provide great support to your sofa while maintaining a bold look with simple geometric lines. Suitable for coastal areas due to their corrosion resistance, they are an ideal choice for updating the look and style of your sofa or lounge.

Specifications

- Fixing: Standard T-Nut hanger bolt 5/16" (8mm)
- Tube: Clear anodised aluminium
- Glide: Black Plastic
- Size: 70w x 70d x 100h mm

The 5/16 bolt will fit a metric 8mm nut making it suitable to use on most IKEA sofas.

Also available with 3/8" (10mm) bolt by special order.

Custom heights are also available.

Order No.	Price
PRE Alu SQ 70x100	\$19.80



Aluminium Sofa Leg 70mm Square 150mm High

The 150mm height of the aluminium sofa leg is great for adding a little height to your sofa or lounge should you require it. The chunky look of the 70mm square leg is also suited to bold lines in the sofa or room decor. A black plastic glide is included to protect flooring.

Specifications

- Fixing: Standard T-Nut hanger bolt 5/16" (8mm)
- Tube: Clear anodised aluminium
- Glide: Black Plastic
- Size: 70w x 70d x 150h mm

The 5/16 bolt will fit a metric 8mm nut making it suitable to use on most IKEA sofas.

Also available with 3/8" (10mm) bolt by special order.

Custom heights are also available.

Order No.	Price
PRE Alu SQ 70x150	\$23.00



Aluminium Sofa Leg 80mm Dia 100mm height

Looking for a round sofa leg? The 80mm diameter of the aluminium sofa legs are perfect for creating that bold look with soft lines. They are finished with a hardwareing anodised finish making them a great choice for coastal areas. Included is a black glide to protect hard floors.

Specifications

- Fixing: Standard T-Nut hanger bolt 5/16" (8mm)
- Tube: Clear anodised aluminium
- Glide: Black Plastic
- Size: 80mm diameter x 100mm high

The 5/16 bolt will fit a metric 8mm nut making it suitable to use on most IKEA sofas.

Also available with 3/8" (10mm) bolt by special order.

Custom heights are also available.

Order No.	Price
PRE 80 100	\$15.48



Aluminium Sofa Leg 80mm Dia 150mm height

An extra tall round sofa leg is used for adding additional height to a sofa. The round aluminium style add a unique element to the look of the sofa, softening bold lines and blending into a varied decor. It is finished with a durable clear anodising and comes with a black plastic glide to protect floors from damage.

Specifications

- Fixing: Standard T-Nut hanger bolt 5/16" (8mm)
- Tube: Clear anodised aluminium
- Glide: Black Plastic
- Size: 80mm diameter x 150 high mm

The 5/16 bolt will fit a metric 8mm nut making it suitable to use on most IKEA sofas.

Also available with 3/8" (10mm) bolt by special order.

Custom heights are also available.

Order No.	Price
PRE 80 150	\$21.48



Black Sofa Leg Round Tapered 100mm Height

These black stained timber sofa and lounge legs are strong but delicate. Reminiscent of retro and mid-century stylings they are a great way to change the look of your sofa entirely.

Specifications

- Fixing: Standard T-Nut hanger bolt 5/16" (8mm)
- Materials: Black stained hardwood
- Glide: None
- Size: 50mm diameter top x 30mm diameter base x 100mm height

The 5/16 bolt will fit a metric 8mm nut making it suitable to use on most IKEA sofas.

Also available with 3/8" (10mm) bolt by special order.

Custom heights are also available.

Order No.	Price
PRE CONE 100 BLACK	\$17.60



Black Sofa Leg Round Tapered 140mm Height

Give your sofa a look that harks back to mid-century stylings with these 140mm high black stained hardwood sofa legs. A great way to completely change the look of your sofa.

Specifications

- Fixing: Standard T-Nut hanger bolt 5/16" (8mm)
- Materials: Black stained hardwood
- Glide: None
- Size: 50mm diameter top x 30mm diameter base x 140mm height

The 5/16 bolt will fit a metric 8mm nut making it suitable to use on most IKEA sofas.

Also available with 3/8" (10mm) bolt by special order.

Custom heights are also available.

Order No.	Price
PRE CONE 140 BLACK	\$21.89



Black Sofa Leg Round Tapered 170mm Height

Add a retro mid-century look to your sofa and extra height at the same time. These sofa legs have delicate line to them, however they are very strong. Made from hardwood with a black stain they are suitable for any decor.

Specifications

- Fixing: Standard T-Nut hanger bolt 5/16" (8mm)
- Materials: Black stained hardwood
- Glide: None
- Size: 50mm diameter top x 30mm diameter base x 170mm height

The 5/16 bolt will fit a metric 8mm nut making it suitable to use on most IKEA sofas.

Also available with 3/8" (10mm) bolt by special order.

Custom heights are also available.

Order No.	Price
PRE CONE 170 BLACK	\$26.40



Chrome Sofa Leg 100mm x 50mm High

This very strong chrome plated sofa leg mounts by screwing directly to the underframe of the sofa. The corner mounting is elegant and assists with supporting the underframe. The chrome plating is very hard wearing and it includes clear silicon glides designed to protect your floor.

Specifications

- Fixing: Screw through mounting plate
- Tube: Chrome plated steel
- Glide: Clear Silicon
- Size: 100w x 100d x 50h mm

Order No.	Price
PRE CH 100x50	\$23.00



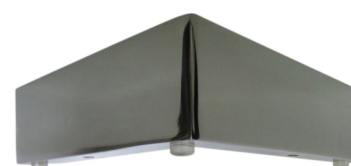
Chrome Sofa Leg 165mm x 50mm High

A chrome plated corner sofa or lounge leg with extra long sides. adds a wonderful grounded element to your sofa while providing additional support to the under frame. Includes clear silicon glides to protect hard flooring.

Specifications

- Fixing: Screw through internal mounting plate
- Tube: Chrome plated steel
- Glide: Black Plastic
- Size: 165d x 165w x 50h mm

Order No.	Price
PRE CH 165x50	\$26.00



Chrome Sofa Leg 50mm Dia 100mm High

Chrome plated with a filleted foot. This is a larger sofa or lounge leg that will add style and height to your sofa bringing a neat blend of style and practicality with a new look for your sofa. Suited to modern styled sofas the chrome will show off the contemporary stylings of your decor. The foot is protected with a concealed glide to protect timber and hard floors.

Specifications

- Fixing: Screw through mounting plate
- Tube: Chrome plated steel
- Glide: Black Plastic
- Size: 50mm Diameter x 100mm High

Order No.	Price
PRE CH ROUND 50x100	\$24.00



Chrome Sofa Leg 60mm Square 120mm High

A taller chrome plated sofa leg that is great for adding a little extra height to your sofa. The chrome finish is suited to modern sofas and decor. It includes an black plastic glide to protect floors from scratches.

Specifications

- Fixing: Screw through mounting plate
- Tube: Chrome plated steel
- Glide: Black Plastic
- Size: 60 width x 60mm depth x 120mm Height

Order No.	Price
PRE CH SQ 60x120	\$23.00



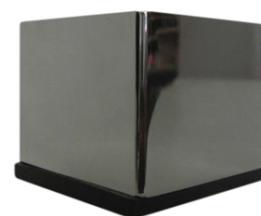
Chrome Sofa Leg 60mm Square 50mm High

A bold chrome plated sofa leg perfect for modern styled sofas and lounges. It is a hefty 60mm square while its low 50mm height still gives it a low profile. The foot comes with a black plastic glide to protect floors.

Specifications

- Fixing: Screw through mounting plate
- Tube: Chrome plated steel
- Glide: Black Plastic
- Size: 60mm width x 60mm deep x 50mm high

Order No.	Price
PRE CH SQ 60x50	\$20.00



Hardwood Cone Sofa Leg Walnut Stain 100mm Height

These walnut stained sofa legs are perfect for changing the look of your sofa to match other mid-century elements in your decor. Their small and compact look is unobtrusive, however they are very strong.

Specifications

- Fixing: Standard T-Nut hanger bolt 5/16" (8mm)
- Materials: walnut stained hardwood
- Glide: None
- Size: 50mm diameter top x 30mm diameter base x 100mm height

The 5/16 bolt will fit a metric 8mm nut making it suitable to use on most IKEA sofas.

Also available with 3/8" (10mm) bolt by special order.

Custom heights are also available.

Order No.	Price
PRE CONE 100 HARD WALNUT	\$16.00



Hardwood Cone Sofa Leg Walnut Stain 140mm Height

The walnut stain is a very traditional look to sofa supports and a very popular finish in the home. The tapered shape add yet another traditional element to the legs that can be used to match retro elements in your home decor. Change up the look of your sofa with these sofa legs.

Specifications

- Fixing: Standard T-Nut hanger bolt 5/16" (8mm)
- Materials: Walnut stained hardwood
- Glide: None
- Size: 50mm diameter top x 30mm diameter base x 140mm height

The 5/16 bolt will fit a metric 8mm nut making it suitable to use on most IKEA sofas.

Also available with 3/8" (10mm) bolt by special order.

Custom heights are also available.

Order No.	Price
PRE CONE 140 HARD WALNUT	\$19.90



Hardwood Cone Sofa Leg Walnut Stain 170mm Height

The walnut stained tapered sofa legs will give your sofa a mid-century retro styling. They add extra height to the sofa creating a traditional high framed look. Made from a walnut stained hardwood they are as strong as they are delicate in style.

Specifications

- Fixing: Standard T-Nut hanger bolt 5/16" (8mm)
- Materials: Walnut stained hardwood
- Glide: None
- Size: 50mm diameter top x 30mm diameter base x 170mm height

The 5/16 bolt will fit a metric 8mm nut making it suitable to use on most IKEA sofas.

Also available with 3/8" (10mm) bolt by special order.

Custom heights are also available.

Order No.	Price
PRE CONE 170 HARD WALNUT	\$19.90



Hardwood Sofa Leg Round Tapered 100mm Height

Add a lightness to your sofa and home decor with these natural finished hardwood sofa legs. strong elegant and with retro stylings they will brighten up any sofa or lounge.

Specifications

- Fixing: Standard T-Nut hanger bolt 5/16" (8mm)
- Materials: Natural finish hardwood
- Glide: None
- Size: 50mm diameter top x 30mm diameter base x 100mm height

The 5/16 bolt will fit a metric 8mm nut making it suitable to use on most IKEA sofas.

Also available with 3/8" (10mm) bolt by special order.

Custom heights are also available.

Order No.	Price
PRE CONE 100 HARD	\$13.20



Hardwood Sofa Leg Round Tapered 140mm Height

Adding a natural finish, light coloured sofa leg to your sofa or lounge will give it a fresh and bright new look. These tapered sofa legs are perfect for just that with their slender shape. The hardwood used makes them strong and sturdy for use with any sofa or lounge.

Specifications

- Fixing: Standard T-Nut hanger bolt 5/16" (8mm)
- Materials: Natural finished hardwood
- Glide: None
- Size: 50mm diameter top x 30mm diameter base x 140mm height

The 5/16 bolt will fit a metric 8mm nut making it suitable to use on most IKEA sofas.

Also available with 3/8" (10mm) bolt by special order.

Custom heights are also available.

Order No.	Price
PRE CONE 140 HARD	\$19.80



Hardwood Sofa Leg Round Tapered 170mm Height

These tapered sofa legs come in a lovely natural hardwood finish. The 170mm height is also great for adding a few inches to the height of your low line sofa. Use these legs to match retro elements in your home decor or just to add a new look to your existing sofa.

Specifications

- Fixing: Standard T-Nut hanger bolt 5/16" (8mm)
- Materials: Natural finished hardwood
- Glide: None
- Size: 50mm diameter top x 30mm diameter base x 170mm height

The 5/16 bolt will fit a metric 8mm nut making it suitable to use on most IKEA sofas.

Also available with 3/8" (10mm) bolt by special order.

Custom heights are also available.

Order No.	Price
PRE CONE 170 HARD NATURAL	\$26.40



Sofa Leg Mounting Plate

These mounting plates are perfect for attaching sofa legs to lounges and sofas that may have non-standard fittings.

They are available in 3/8" and 5/16" sizes to match the standard fitting for the sofa leg range. Their compact size and low profile ensure they remain tucked out of sight on the furniture they are installed on.

NOTE: Screws are not provided due to the different types of material they can be attached to.

Specifications

- Material: Zinc Plated Steel
- Mounting: 3/8" or 5/16" clinch nut

Order No.	Price	Mounting Plate Thread Size
AR MOUNT.38	\$2.30	3/8" Thread
AR MOUNT.516	\$2.30	5/16" Thread



Sofa Leg Square Tapered 140mm Height Walnut

Add some extra height to your sofa with these traditionally styled hardwood sofa legs in a walnut stain. The pyramid shade is suited to sofas and lounges with a traditional look.

Specifications

- Fixing: Standard T-Nut hanger bolt 5/16" (8mm)
- Materials: Walnut stained hardwood
- Glide: None
- Size: 85mm square top x 55mm square base x 140mm high

The 5/16 bolt will fit a metric 8mm nut making it suitable to use on most IKEA sofas.

Also available with 3/8" (10mm) bolt by special order.

Custom heights are also available.

Order No.	Price
PRE PYR 140 WALL	\$13.50



Sofa Leg Square Tapered 70mm Height Walnut

A traditional block style pyramid leg that is useful for matching legs on more traditional styled sofas. The walnut stain is a common finish in the modern home allowing you to match traditional sofas and lounges to modern elements.

Specifications

- Fixing: Standard T-Nut hanger bolt 5/16" (8mm)
- Materials: Walnut stained hardwood
- Glide: None
- Size: 85mm square top x 50mm square base x 70mm high

The 5/16 bolt will fit a metric 8mm nut making it suitable to use on most IKEA sofas.

Also available with 3/8" (10mm) bolt by special order.

Custom heights are also available.

Order No.	Price
PRE PYR 70 WALL	\$9.00



Stainless Steel Sofa Leg 50mm Dia 50mm height

Small and compact, the stainless steel sofa leg is a great choice for those wanting a low profile look to their sofa and may want to match existing elements of stainless steel throughout their home and living area. It is also a great choice for coastal areas as the stainless steel is corrosion resistant.

Specifications

- Fixing: Standard T-Nut hanger bolt 5/16" (8mm)
- Tube: Stainless Steel
- Glide: Black Plastic
- Size: 50mm Diameter x 50mm High

The 5/16 bolt will fit a metric 8mm nut making it suitable to use on most IKEA sofas.

Also available with 3/8" (10mm) bolt by special order.

Custom heights are also available.

Order No.	Price
PRE ST 50 50	\$15.48



Aluminium

Aluminium Sofa Leg 38mm Square 100mm High

Update the look of your sofa to match other silver and aluminium finished elements in your home with these aluminium sofa legs. Clear anodised for a durable finish they include a black plastic glide to protect your floors.

Specifications

- Fixing: Standard T-Nut hanger bolt 5/16" (8mm)
- Tube: Clear anodised aluminium
- Glide: Black Plastic
- Size: 38w x 38d x 100h mm

The 5/16 bolt will fit a metric 8mm nut making it suitable to use on most IKEA sofas.

Also available with 3/8" (10mm) bolt by special order.

Custom heights are also available.

Order No.	Price
PRE Alu SQ 38x100	\$15.50



Aluminium

Aluminium Sofa Leg 38mm Square 150mm High

Slim in width but with extra height, these aluminium sofa legs are great for adding extra height to your sofa while maintaining a delicate look. Made from clear anodised aluminium they are corrosion resistant making them perfect for coastal areas. Complete with a black plastic glide to help protect your floors.

Specifications

- Fixing: Standard T-Nut hanger bolt 5/16" (8mm)
- Tube: Clear anodised aluminium
- Glide: Black Plastic
- Size: 38w x 38d x 150h mm

The 5/16 bolt will fit a metric 8mm nut making it suitable to use on most IKEA sofas. Also available with 3/8" (10mm) bolt by special order. Custom heights are also available.

Order No.	Price
PRE Alu SQ 38x150	\$19.80



Aluminium Sofa Leg 50mm Square 100mm High

The perfect sofa leg for complementing the geometric lines of your sofa or lounge with a modern aluminium finish. Clear anodised for a hardwareing corrosion resistant surface that are a good choice for coastal areas. Included with a black plastic glide to protect your floors.

Specifications

- Fixing: Standard T-Nut hanger bolt 5/16" (8mm)
- Tube: Clear anodised aluminium
- Glide: Black Plastic
- Size: 50w x 50d x 100h mm

The 5/16 bolt will fit a metric 8mm nut making it suitable to use on most IKEA sofas. Also available with 3/8" (10mm) bolt by special order. Custom heights are also available.

Order No.	Price
PRE Alu SQ 50x100	\$15.50



Aluminium Sofa Leg 50mm Square 150mm High

The perfect mid sized sofa leg with a little extra height. Add those missing inches to the height of your sofa without compromising on the style of the legs. Finished with a durable clear anodising they are great for coastal areas due to their corrosion resistance. Finished with a black plastic glide to protect your floors from scratching.

Specifications

- Fixing: Standard T-Nut hanger bolt 5/16" (8mm)
- Tube: Clear anodised aluminium
- Glide: Black Plastic
- Size: 50w x 50d x 150h mm

The 5/16 bolt will fit a metric 8mm nut making it suitable to use on most IKEA sofas. Also available with 3/8" (10mm) bolt by special order. Custom heights are also available.

Order No.	Price
PRE Alu SQ 50x150	\$19.80



Aluminium

Aluminium Sofa Leg 60mm Dia 100mm height

A great all rounder sofa leg. The round shape adds softness to geometric lines in sofas and the shorter more compact shape makes it less obtrusive. The clear anodised finish gives it a hardwareing corrosion resistant surface for use in coastal areas.

Specifications

- Fixing: Standard T-Nut hanger bolt 5/16" (8mm)
- Tube: Clear anodised aluminium
- Glide: Black Plastic
- Size: 60mm diameter x 100 high mm

The 5/16 bolt will fit a metric 8mm nut making it suitable to use on most IKEA sofas. Also available with 3/8" (10mm) bolt by special order. Custom heights are also available.

Order No.	Price
PRE100	\$14.07



Aluminium Sofa Leg 60mm Dia 150mm High

A slightly thinner, taller sofa leg that is great for increasing the height of low line sofas. The anodised aluminium finish is corrosion resistant making them a good choice for coastal areas.

Specifications

- Fixing: Standard T-Nut hanger bolt 5/16" (8mm)
- Tube: Clear anodised aluminium
- Glide: Black Plastic
- Size: 60mm diameter x 150 high mm

The 5/16 bolt will fit a metric 8mm nut making it suitable to use on most IKEA sofas. Also available with 3/8" (10mm) bolt by special order. Custom heights are also available.

Order No.	Price
PRE150	\$19.50



Aluminium Sofa Leg 70mm Square 100mm High

Short and wide, these aluminium sofa legs provide great support to your sofa while maintaining a bold look with simple geometric lines. Suitable for coastal areas due to their corrosion resistance, they are an ideal choice for updating the look and style of your sofa or lounge.

Specifications

- Fixing: Standard T-Nut hanger bolt 5/16" (8mm)
- Tube: Clear anodised aluminium
- Glide: Black Plastic
- Size: 70w x 70d x 100h mm

The 5/16 bolt will fit a metric 8mm nut making it suitable to use on most IKEA sofas. Also available with 3/8" (10mm) bolt by special order. Custom heights are also available.

Order No.	Price
PRE Alu SQ 70x100	\$19.80



Aluminium

Aluminium Sofa Leg 70mm Square 150mm High

The 150mm height of the aluminium sofa leg is great for adding a little height to your sofa or lounge should you require it. The chunky look of the 70mm square leg is also suited to bold lines in the sofa or room decor. A black plastic glide is included to protect flooring.

Specifications

- Fixing: Standard T-Nut hanger bolt 5/16" (8mm)
- Tube: Clear anodised aluminium
- Glide: Black Plastic
- Size: 70w x 70d x 150h mm

The 5/16 bolt will fit a metric 8mm nut making it suitable to use on most IKEA sofas.
Also available with 3/8" (10mm) bolt by special order.
Custom heights are also available.

Order No.	Price
PRE Alu SQ 70x150	\$23.00



Aluminium Sofa Leg 80mm Dia 100mm height

Looking for a round sofa leg? The 80mm diameter of the aluminium sofa legs are perfect for creating that bold look with soft lines. They are finished with a hardware anodised finish making them a great choice for coastal areas. Included is a black glide to protect hard floors.

Specifications

- Fixing: Standard T-Nut hanger bolt 5/16" (8mm)
- Tube: Clear anodised aluminium
- Glide: Black Plastic
- Size: 80mm diameter x 100mm high

The 5/16 bolt will fit a metric 8mm nut making it suitable to use on most IKEA sofas.
Also available with 3/8" (10mm) bolt by special order.
Custom heights are also available.

Order No.	Price
PRE 80 100	\$15.48



Aluminium Sofa Leg 80mm Dia 150mm height

An extra tall round sofa leg is used for adding additional height to a sofa. The round aluminium style add a unique element to the look of the sofa, softening bold lines and blending into a varied decor. It is finished with a durable clear anodising and comes with a black plastic glide to protect floors from damage.

Specifications

- Fixing: Standard T-Nut hanger bolt 5/16" (8mm)
- Tube: Clear anodised aluminium
- Glide: Black Plastic
- Size: 80mm diameter x 150 high mm

The 5/16 bolt will fit a metric 8mm nut making it suitable to use on most IKEA sofas.
Also available with 3/8" (10mm) bolt by special order.
Custom heights are also available.

Order No.	Price
PRE 80 150	\$21.48



Chrome

Chrome Sofa Leg 100mm x 50mm High

This very strong chrome plated sofa leg mounts by screwing directly to the underframe of the sofa. The corner mounting is elegant and assists with supporting the underframe. The chrome plating is very hard wearing and it includes clear silicon glides designed to protect your floor.

Specifications

- Fixing: Screw through mounting plate
- Tube: Chrome plated steel
- Glide: Clear Silicon
- Size: 100w x 100d x 50h mm

Order No.	Price
PRE CH 100x50	\$23.00



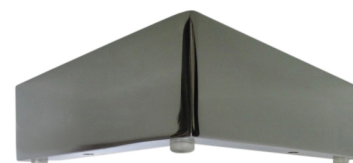
Chrome Sofa Leg 165mm x 50mm High

A chrome plated corner sofa or lounge leg with extra long sides. adds a wonderful grounded element to your sofa while providing additional support to the under frame. Includes clear silicon glides to protect hard flooring.

Specifications

- Fixing: Screw through internal mounting plate
- Tube: Chrome plated steel
- Glide: Black Plastic
- Size: 165d x 165w x 50h mm

Order No.	Price
PRE CH 165x50	\$26.00



Chrome Sofa Leg 50mm Dia 100mm High

Chrome plated with a filleted foot. This is a larger sofa or lounge leg that will add style and height to your sofa bringing a neat blend of style and practicality with a new look for your sofa. Suited to modern styled sofas the chrome will show off the contemporary stylings of your decor. The foot is protected with a concealed glide to protect timber and hard floors.

Specifications

- Fixing: Screw through mounting plate
- Tube: Chrome plated steel
- Glide: Black Plastic
- Size: 50mm Diameter x 100mm High

Order No.	Price
PRE CH ROUND 50x100	\$24.00



Chrome Sofa Leg 60mm Square 120mm High

A taller chrome plated sofa leg that is great for adding a little extra height to your sofa. The chrome finish is suited to modern sofas and decor. It includes a black plastic glide to protect floors from scratches.

Specifications

- Fixing: Screw through mounting plate
- Tube: Chrome plated steel
- Glide: Black Plastic
- Size: 60 width x 60mm depth x 120mm Height

Order No.	Price
PRE CH SQ 60x120	\$23.00



Chrome

Chrome Sofa Leg 60mm Square 50mm High

A bold chrome plated sofa leg perfect for modern styled sofas and lounges. It is a hefty 60mm square while its low 50mm height still gives it a low profile. The foot comes with a black plastic glide to protect floors.

Specifications

- Fixing: Screw through mounting plate
- Tube: Chrome plated steel
- Glide: Black Plastic
- Size: 60mm width x 60mm deep x 50mm high

Order No.	Price
PRE CH SQ 60x50	\$20.00



Mounting plate

Sofa Leg Mounting Plate

These mounting plates are perfect for attaching sofa legs to lounges and sofas that may have non-standard fittings.

They are available in 3/8" and 5/16" sizes to match the standard fitting for the sofa leg range. Their compact size and low profile ensure they remain tucked out of sight on the furniture they are installed on.

NOTE: Screws are not provided due to the different types of material they can be attached to.

Specifications

- Material: Zinc Plated Steel
- Mounting: 3/8" or 5/16" clinch nut

Order No.	Price	Mounting Plate Thread Size
AR MOUNT.38	\$2.30	3/8" Thread
AR MOUNT.516	\$2.30	5/16" Thread



Stainless Steel

Stainless Steel Sofa Leg 50mm Dia 50mm height

Small and compact, the stainless steel sofa leg is a great choice for those wanting a low profile look to their sofa and may want to match existing elements of stainless steel throughout their home and living area. It is also a great choice for coastal areas as the stainless steel is corrosion resistant.

Specifications

- Fixing: Standard T-Nut hanger bolt 5/16" (8mm)
- Tube: Stainless Steel
- Glide: Black Plastic
- Size: 50mm Diameter x 50mm High

The 5/16 bolt will fit a metric 8mm nut making it suitable to use on most IKEA sofas.

Also available with 3/8" (10mm) bolt by special order.

Custom heights are also available.

Order No.	Price
PRE ST 50 50	\$15.48



Timber

Black Sofa Leg Round Tapered 100mm Height

These black stained timber sofa and lounge legs are strong but delicate. Reminiscent of retro and mid-century stylings they are a great way to change the look of your sofa entirely.

Specifications

- Fixing: Standard T-Nut hanger bolt 5/16" (8mm)
- Materials: Black stained hardwood
- Glide: None
- Size: 50mm diameter top x 30mm diameter base x 100mm height

The 5/16 bolt will fit a metric 8mm nut making it suitable to use on most IKEA sofas.

Also available with 3/8" (10mm) bolt by special order.

Custom heights are also available.

Order No.	Price
PRE CONE 100 BLACK	\$17.60



Black Sofa Leg Round Tapered 140mm Height

Give your sofa a look that harks back to mid-century stylings with these 140mm high black stained hardwood sofa legs. A great way to completely change the look of your sofa.

Specifications

- Fixing: Standard T-Nut hanger bolt 5/16" (8mm)
- Materials: Black stained hardwood
- Glide: None
- Size: 50mm diameter top x 30mm diameter base x 140mm height

The 5/16 bolt will fit a metric 8mm nut making it suitable to use on most IKEA sofas.

Also available with 3/8" (10mm) bolt by special order.

Custom heights are also available.

Order No.	Price
PRE CONE 140 BLACK	\$21.89



Black Sofa Leg Round Tapered 170mm Height

Add a retro mid-century look to your sofa and extra height at the same time. These sofa legs have delicate line to them, however they are very strong. Made from hardwood with a black stain they are suitable for any decor.

Specifications

- Fixing: Standard T-Nut hanger bolt 5/16" (8mm)
- Materials: Black stained hardwood
- Glide: None
- Size: 50mm diameter top x 30mm diameter base x 170mm height

The 5/16 bolt will fit a metric 8mm nut making it suitable to use on most IKEA sofas.

Also available with 3/8" (10mm) bolt by special order.

Custom heights are also available.

Order No.	Price
PRE CONE 170 BLACK	\$26.40



Timber

Hardwood Cone Sofa Leg Walnut Stain 100mm Height

These walnut stained sofa legs are perfect for changing the look of your sofa to match other mid-century elements in your decor. Their small and compact look is unobtrusive, however they are very strong.

Specifications

- Fixing: Standard T-Nut hanger bolt 5/16" (8mm)
- Materials: walnut stained hardwood
- Glide: None
- Size: 50mm diameter top x 30mm diameter base x 100mm height

The 5/16 bolt will fit a metric 8mm nut making it suitable to use on most IKEA sofas.
Also available with 3/8" (10mm) bolt by special order.
Custom heights are also available.

Order No.	Price
PRE CONE 100 HARD WALNUT	\$16.00



Hardwood Cone Sofa Leg Walnut Stain 140mm Height

The walnut stain is a very traditional look to sofa supports and a very popular finish in the home. The tapered shape add yet another traditional element to the legs that can be used to match retro elements in your home decor. Change up the look of your sofa with these sofa legs.

Specifications

- Fixing: Standard T-Nut hanger bolt 5/16" (8mm)
- Materials: Walnut stained hardwood
- Glide: None
- Size: 50mm diameter top x 30mm diameter base x 140mm height

The 5/16 bolt will fit a metric 8mm nut making it suitable to use on most IKEA sofas.
Also available with 3/8" (10mm) bolt by special order.
Custom heights are also available.

Order No.	Price
PRE CONE 140 HARD WALNUT	\$19.90



Hardwood Cone Sofa Leg Walnut Stain 170mm Height

The walnut stained tapered sofa legs will give your sofa a mid-century retro styling. They add extra height to the sofa creating a traditional high framed look. Made from a walnut stained hardwood they are as strong as they are delicate in style.

Specifications

- Fixing: Standard T-Nut hanger bolt 5/16" (8mm)
- Materials: Walnut stained hardwood
- Glide: None
- Size: 50mm diameter top x 30mm diameter base x 170mm height

The 5/16 bolt will fit a metric 8mm nut making it suitable to use on most IKEA sofas.
Also available with 3/8" (10mm) bolt by special order.
Custom heights are also available.

Order No.	Price
PRE CONE 170 HARD WALNUT	\$19.90



Timber

Hardwood Sofa Leg Round Tapered 100mm Height

Add a lightness to your sofa and home decor with these natural finished hardwood sofa legs. strong elegant and with retro stylings they will brighten up any sofa or lounge.

Specifications

- Fixing: Standard T-Nut hanger bolt 5/16" (8mm)
- Materials: Natural finish hardwood
- Glide: None
- Size: 50mm diameter top x 30mm diameter base x 100mm height

The 5/16 bolt will fit a metric 8mm nut making it suitable to use on most IKEA sofas.

Also available with 3/8" (10mm) bolt by special order.

Custom heights are also available.

Order No.	Price
PRE CONE 100 HARD	\$13.20



Hardwood Sofa Leg Round Tapered 140mm Height

Adding a natural finish, light coloured sofa leg to your sofa or lounge will give it a fresh and bright new look.

These tapered sofa legs are perfect for just that with their slender shape. The hardwood used makes them strong and sturdy for use with any sofa or lounge.

Specifications

- Fixing: Standard T-Nut hanger bolt 5/16" (8mm)
- Materials: Natural finished hardwood
- Glide: None
- Size: 50mm diameter top x 30mm diameter base x 140mm height

The 5/16 bolt will fit a metric 8mm nut making it suitable to use on most IKEA sofas.

Also available with 3/8" (10mm) bolt by special order.

Custom heights are also available.

Order No.	Price
PRE CONE 140 HARD	\$19.80



Hardwood Sofa Leg Round Tapered 170mm Height

These tapered sofa legs come in a lovely natural hardwood finish. The 170mm height is also great for adding a few inches to the height of your low line sofa. Use these legs to match retro elements in your home decor or just to add a new look to your existing sofa.

Specifications

- Fixing: Standard T-Nut hanger bolt 5/16" (8mm)
- Materials: Natural finished hardwood
- Glide: None
- Size: 50mm diameter top x 30mm diameter base x 170mm height

The 5/16 bolt will fit a metric 8mm nut making it suitable to use on most IKEA sofas.

Also available with 3/8" (10mm) bolt by special order.

Custom heights are also available.

Order No.	Price
PRE CONE 170 HARD NATURAL	\$26.40



Timber

Sofa Leg Square Tapered 140mm Height Walnut

Add some extra height to your sofa with these traditionally styled hardwood sofa legs in a walnut stain. The pyramid shade is suited to sofas and lounges with a traditional look.

Specifications

- Fixing: Standard T-Nut hanger bolt 5/16" (8mm)
- Materials: Walnut stained hardwood
- Glide: None
- Size: 85mm square top x 55mm square base x 140mm high

The 5/16 bolt will fit a metric 8mm nut making it suitable to use on most IKEA sofas.
Also available with 3/8" (10mm) bolt by special order.
Custom heights are also available.

Order No.	Price
PRE PYR 140 WALL	\$13.50



Sofa Leg Square Tapered 70mm Height Walnut

A traditional block style pyramid leg that is useful for matching legs on more traditional styled sofas. The walnut stain is a common finish in the modern home allowing you to match traditional sofas and lounges to modern elements.

Specifications

- Fixing: Standard T-Nut hanger bolt 5/16" (8mm)
- Materials: Walnut stained hardwood
- Glide: None
- Size: 85mm square top x 50mm square base x 70mm high

The 5/16 bolt will fit a metric 8mm nut making it suitable to use on most IKEA sofas.
Also available with 3/8" (10mm) bolt by special order.
Custom heights are also available.

Order No.	Price
PRE PYR 70 WALL	\$9.00



Brushed Steel Bench Leg, 60mm dia, Adjustable 410-440mm

410mm legs are the standard height for benches or can be used for coffee tables and side tables. utilising a strong mounting system they can be leveled over uneven ground using the adjustable foot. If required the adjustable foot can be removed to facilitate cutting down the legs to a custom height.

Sold as individual legs

Note: mounting screws are not provided due to wide range of materials and applications.

- Leg: Tube steel
- Glide: Black Plastic
- Adjustment: +30mm
- Size: 60mm Diameter x 410mm high
- Height of bench leg includes mounting plate
- Fixed centre screw allows for toolless assembly and flatpacked transport of furniture

Order No.	Price
BL.410.BR	\$24.00



Chrome Bench Leg, 60mm dia, Adjustable 410-440mm

410mm legs are perfect for creating seated benches or low coffee and side tables. The extra strong mounting system will leave the bench or table very sturdy and the 30mm of adjustment is great for leveling the legs over uneven ground. If required the adjustable foot can be removed to facilitate cutting down the legs to a custom height.

Sold as individual legs

Note: mounting screws are not provided due to wide range of materials and applications.

- Leg: Tube steel
- Glide: Black Plastic
- Adjustment: +30mm
- Size: 60mm Diameter x 410mm high
- Height of bench leg includes mounting plate
- Fixed centre screw allows for toolless assembly and flatpacked transport of furniture

Order No.	Price
BL.410.CH	\$24.00



Matt Brushed Stainless Steel Table Leg, 60mm dia, Adjustable 1100-1130mm

Matt Brushed Stainless Steel Table Leg, 60mm dia, Adjustable 1100-1130mm

Sold Per Leg

- Tube: Brushed stainless steel
- Glide: Black Plastic
- Adjustment: +30mm

These strong and sturdy desk / table legs are perfect for creating a DIY study desk or as a bench support.

The wide mounting plate is easily screwed onto the work surface creating a steady and stable mounting for the legs.

The +30mm of adjustment is perfect for leveling a table on uneven floors or supporting a bench over a sloping floor.

Note: mounting screws are not provided due to wide range of materials and applications.

Bulk Orders available.

Order No.	Price
TL.1100.MB	\$40.00



Table Legs

Polished Chrome Table Leg, 60mm dia, Adjustable 1100-1130mm

Polished Chrome Steel Table Leg, 60mm dia, Adjustable 1100-1130mm

Sold Per leg

- Tube: Chrome plated steel
- Glide: Black plastic
- Adjustment: +30mm

These strong and sturdy desk / table legs are perfect for creating a DIY study desk or as a bench support.

The wide mounting plate is easily screwed onto the work surface creating a steady and stable mounting for the legs.

The +30mm of adjustment is perfect for leveling a table on uneven floors or supporting a bench over a sloping floor.

Note: mounting screws are not provided due to wide range of materials and applications.

Bulk Orders available.

Order No.	Price
TL.1100.PC	\$42.00



Table Legs 690-720mm

690mm legs are the standard height for most work and study desks. These strong tube steel legs have an extra sturdy mounding system removing wobble from the legs, leaving the desk very stable. The 30mm of adjustment is great for leveling the desk over uneven ground. If required the adjustable foot can be removed to facilitate cutting down the legs to a custom height.

Sold as individual legs

Note: mounting screws are not provided due to wide range of materials and applications.

- Leg: Tube steel
- Glide: Black Plastic
- Adjustment: +30mm
- Size: 60mm Diameter x 690mm high
- Height of table leg includes mounting plate
- Fixed centre screw allows for toolless assembly and flatpacked transport of furniture

Order No.	Price	Table Leg Colour
TL690.CH	\$26.00	Chrome
TL690.BN	\$26.00	Brushed Nickel
TL690.SI	\$26.00	Silver
TL690.WH	\$26.00	White
TL690.GB	\$26.00	Gloss Black
TL690.MB	\$26.00	Matt Black



Table Legs 710-740mm

710mm table legs are standard height for a dining table. These use an extra strong mounting system to remove any wobble in the legs. The adjustable foot will then level the table on uneven floors. Should you need to adjust the overall high of the legs, the foot can be removed before the legs are cut down to size.

Note: mounting screws are not provided due to wide range of materials and applications.

- Leg: Tube steel
- Glide: Black Plastic
- Adjustment: +30mm
- Height of table leg includes mounting plate
- Fixed centre screw allows for toolless assembly and flatpacked transport of furniture

Order No.	Price	Table Leg Colour
TL710.CH	\$28.00	Chrome
TL710.BN	\$28.00	Brushed Nickel
TL710.SI	\$28.00	Silver
TL710.GB	\$28.00	Gloss Black
TL710.MB	\$28.00	Matt Black

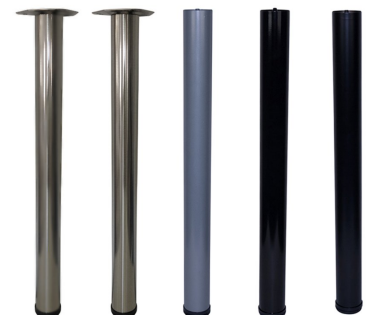


Table Legs 870-900mm

870mm table legs are a great height for a standing work bench or counter table. Made from sturdy tube steel and with an extra strong mounting system, these legs wont wobble! The adjustable foot can be removed should you wish to cut down the legs to a custom height. Simply pop it back of to get the 30mm of heigh adjustment to level the table on uneven or sloaping floors.

Sold as individual legs

Note: mounting screws are not provided due to wide range of materials and applications.

- Leg: Tube steel
- Glide: Black Plastic
- Adjustment: +30mm
- Height of table leg includes mounting plate
- Fixed centre screw allows for toolless assembly and flatpacked transport of furniture



Order No.	Price	Table Leg Colour
TL870.GB	\$26.00	Gloss Black
TL870.BN	\$26.00	Brushed Nickel
TL870.CH	\$26.00	Chrome



urbanhardware.net.au

31 Princes Hwy St peters NSW 2044

ph 02 8959 6959

sales@urbanhardware.net.au